



Commercial Product Spotlight



Florham Park Headquarters

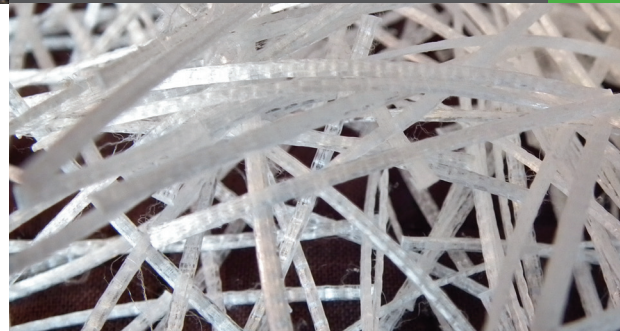
Overview

BASF helps to maximize energy efficiency in commercial buildings via a robust portfolio of insulation materials for roofs, walls and foundations. Our air barrier technologies keep conditioned air inside the structure while our adhesives and sealants help further contribute to airtight construction. Specially formulated admixture systems help reduce carbon footprint, enhance durability and provide water repellency, and our pervious concrete and porous asphalt solutions improve drainage, reducing or eliminating the need for storm water storage. Plus, BASF chemistry found in paints, flooring and finishings helps create products that reduce or eliminate VOCs. And our office and area partitions combine sound transfer control, design freedom and provide quick assembly and installation.



BASF Center for Building Excellence

For more information on these products or to connect about other sustainable building practices, collaborate with us at [construction.basf.us/cbe](https://www.construction.basf.us/cbe).



MasterFiber® – concrete-reinforcing fiber



Enershield® – air/water-resistive barriers



Neopor® – graphite-enhanced rigid foam insulation

Construction Specifications Institute MasterFormat

BASF products can be found throughout a variety of divisions across the commercial construction industry.

Division 03: Concrete

ELASTOPAVE® Technology: a poured-in-place pervious pavement for pedestrian and light vehicular traffic loads made from locally sourced bonded architectural stone or recycled glass. It filters storm water/pollutants, mimics natural hydrology, can reduce or eliminate retention ponds and minimizes water treatment demand. Less construction site interruption and reduces heat island effect. Excellent option for storm water management.

Green Sense® Concrete: an environmentally preferred, cost-effective concrete with optimized proportions in which supplementary cementitious materials, non-cementitious fillers, or both, are used with special Master Builders Solutions admixtures. Environmental Product Declaration available.

MasterFiber®: various monofilament, fibrillated and macrosynthetic fiber types using polypropylene resins to address shrinkage cracking, flexural strength, finish and durability.

MasterLife® 300D: an integral crystalline capillary waterproofing admixture for concrete. It is designed for use in above- and below-grade applications. A red-pigmented version of MasterLife 300D admixture is also available.

Division 05: Metals

Sandwich Plate System (SPS): Intelligent Engineering has developed SPS over the past 20 years. SPS is a composite material comprising two metal plates bonded with polyurethane elastomercore. It is a structural element that is available now as a stronger, faster-to-install, structural replacement for concrete in all types of applications. SPS is accepted and used by engineers and architects worldwide for projects that include floors, cores and walls for high-rise buildings; stadium and arena grandstands and terraces; new construction or reinstatement of highway and pedestrian bridges; ballistic and blast protection for buildings and structures; sound and vibration control of industrial machinery.

Division 07: Thermal and Moisture Protection

Elastospray® and Elastocoat®: a seamless closed-cell, spray-applied polyurethane foam roofing system for new and existing roofs. The lightweight system improves building energy efficiency and indoor comfort; is applicable over existing substrates saving tear-off costs and waste; and is proven leak free with a long-term warranty offering. It has a long service life, repairs easily, and it can be re-coated and renewed to extend service life 10–30+ years. It also boasts the highest wind uplift resistance.

Enershield® HP and Enershield® I:

one-component, fluid-applied vapor permeable or impermeable air/water-resistive barrier. This waterproof, resilient coating may be spray-, roller-, brush- or trowel-applied directly to approved above grade wall substrates to create a seamless barrier of protection. Air Barrier Association of America (ABAA) evaluated.

Neopor®: A graphite enhanced polystyrene (GPS) based rigid thermal foam insulation that can help mitigate the risk of damage associated with condensation of water vapor inside of wall cavities. With Neopor only air fills the cells. This means Neopors® R value remains stable over time. Neopor is GREENGUARD® GOLD certified for low chemical emissions.

MasterSeal® NP100: high-performance sealant with superior unprimed adhesion to a broad range of substrates, saving material and labor. Paintable, one-component, non-sag, hybrid sealant with excellent movement capability and weathering performance. Ideal for both new construction and restoration.

Platinum CI: exterior cladding system featuring Neopor® advanced insulation technology. It offers design flexibility, aesthetic appeal and energy savings. Integrated system components include reinforced air/water-resistive barrier, adhesive, Neopor insulation board, reinforced base coat and 100% acrylic polymer finish. IBC, IRC and IECC listed product.

WALLTITE®: closed-cell, spray-applied polyurethane system combines industry-leading air permeance ratings and a superior insulation R-value to make a significant contribution to building energy efficiency. WALLTITE can be applied inside the cavity or on the building exterior as continuous insulation and an air/weather-resistant barrier. NFPA & ABAA approved.

Wabo® FireShield: unified, fire rated, sound-attenuating, ultraviolet (UV) light stable, thermal- and water-resistant sealant system. Features waterproof silicone seals on each side of a fire-retardant impregnated foam sealant without the need for additional intumescent bellows.

Wabo® SeismicPan: accommodates multi-directional seismic movement, including lateral shear without stress to its components during thermal movement. Meets ADA Guidelines and stays flush during thermal movement and rises upward during a seismic event permitting full movement within the structural joint opening.

Division 09: Finishes

Basotect® Melamine Foam: a lightweight, flexible, open-cell foam that is used in room acoustic products. Basotect-based products have a high absorption capability of sound waves. When left untreated, the sound waves will reflect off of hard surfaces increasing the background noise and decreasing speech intelligibility. Basotect provides a high degree of design freedom as the foam can be easily processed into a variety of different shapes and can be easily colored or combined with different laminates. The foam is also very lightweight, meaning it is very easy to install. With regard to safety, the product contains no fibers, meets NFPA Class A fire ratings without the use of flame retardants, and, when installed in the right proportions, meets the California 1350 indoor air quality standard.

Flexible White Roof Coatings:

BASF's Acronal® acrylic dispersions and Quick-Trigger® technology are specifically designed for use in sustainable reflective roof solutions that help contractors protect against "wash-off" from early rain, decrease labor time and broaden the application season. Ask about BASF's Brilliance™ Roof Coating Program, a holistic approach to acrylics used in roof coatings.

MasterTop®: resinous flooring systems combine the ease of maintenance with the toughness and durability required in challenging commercial, institutional, and chemical environments. In addition, the flooring systems can be installed in a variety of attractive colors, finishes and surface profiles.

MasterTop® SRS: methyl-methacrylate (MMA) self-leveling flooring system for use in areas that require a quick curing, decorative floor. Save on labor with one-hour curing time; requires no stripping or waxing which reduces maintenance costs.

MasterTop MV 240FS: moisture vapor barrier that is a rapid curing, VOC compliant, two-component, 100% solids epoxy system for resinous floor coatings. Compatible with MasterTop flooring systems.

Platinum CI Stucco: continuously insulated stucco system featuring Neopor® advanced insulation technology. It offers design flexibility, aesthetic appeal and energy savings. Integrated system components include BASF air/water-resistive barrier, Neopor insulation board, lath, BASF stucco base and finish coat. IBC, IRC AND IECC listed product.