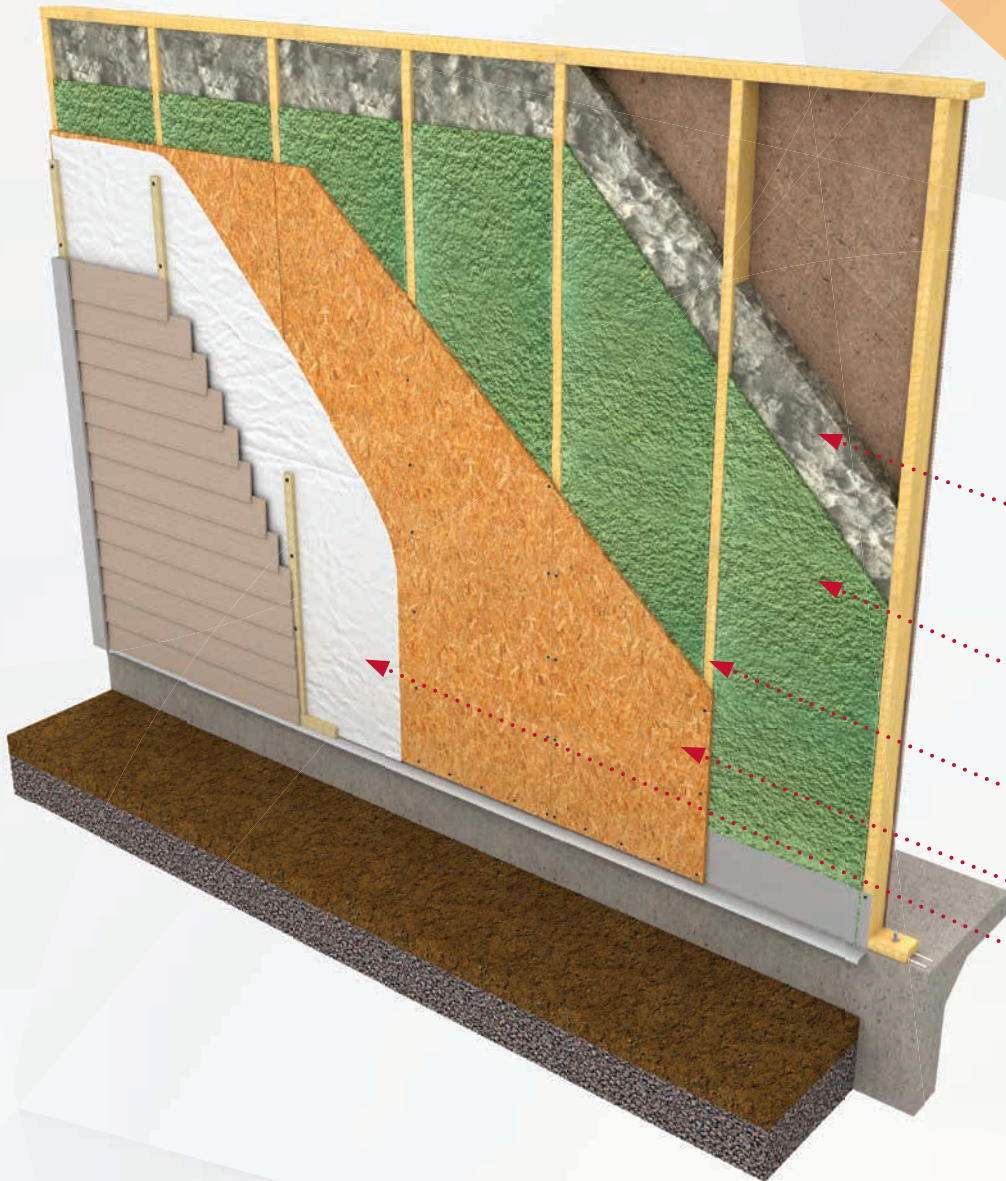


HP+™ Wall System A Series



- 2.75" space for additional fill insulation (fill insulation types include additional WALLTITE® HP+, ENERTITE®, cellulose, fiberglass batts or blow-in-blanket system)
- 3/4" WALLTITE HP+ High Performance insulating air barrier material
- 2x4 wood framing at 24" on center construction
- 7/16" OSB
- Water-resistive barrier

The HP+ Wall System A Series is a durable, structural assembly that meets or exceeds codes while using less wood than traditional construction, resulting in energy and cost efficiency.

Build Stronger: Create stronger, more durable structures while using less wood

Build Smarter: Create an envelope that meets all current energy efficiency standards with 2x4 wood framing

Build Sustainably: Show your commitment to the environment with a wall system that saves energy and fossil fuel demand of the home

 **BASF**
We create chemistry

Systematic Success.

The HP+™ Wall System A Series is designed to deliver a smart new way to build high performance homes affordably.

The wall assembly features the following:

- 2x4 wood framing at 24" on center construction
- Water-resistive barrier
- Minimal to no changes in current construction

From the inside of the wall:

- Minimum 3/4" WALLTITE® HP+ High Performance insulating air barrier material
- 2.75" space for additional fill insulation (fill insulation types include additional WALLTITE HP+, ENERTITE®, cellulose, fiberglass batts or blow-in-blanket system)

The HP+ Wall System A Series is just one of the offerings in our growing portfolio of HP+ Building Enclosure Systems, which are paired with our HP+ Consultative Solutions to complete our groundbreaking BEYOND.High Performance® approach to construction. With BEYOND.High Performance, BASF provides you with the expertise and solutions you need to meet new and changing codes and build affordable, sustainable high performance homes.

Visit us at www.basfbeyondhome.us or call 888-307-6602 to learn more.

BEYOND.High Performance® is a registered service mark of BASF. WALLTITE and ENERTITE are registered trademarks of BASF. Home Energy Rating System, HERS® is a registered trademark of Residential Energy Services Network (RESNET). HP+™ Wall System is a registered trademark of BASF Corporation. Patent pending.
©2016 BASF Corporation
BF-10442

+ Strength in Numbers.

By incorporating advanced framing and combining control layers into a single wall design, the HP+ Wall System A Series increases structural integrity while reducing lumber content. When properly designed and installed, the HP+ Wall System can offer one of the best values available for residential construction.

Benefits include:

- Can reduce lumber content by up to 25% with advanced framing techniques
- Increased lateral load capacity of a typically full sheathed 2x4 wall with 7/16" OSB wall, allows for design flexibility¹
- Improved moisture management, which can increase thermal and structural performance and reduce builder callbacks
- Reduced air leakage

+ Keep the Outside Out:

Thermal, Air, Moisture and Water

With integrated heat, air, moisture and vapor management in a single system, the HP+ Wall System A Series offers crucial control of outside elements.

- Provides higher thermal performance in standard dimension wall cavity, preserving your square footage
- Achieves a R-13 – R-23 in a 2x4 building construction configuration
- Achieves optimum R-value by air sealing the wall assembly

+ Up the Efficiency. Up to Code.

With the HP+ Wall System A Series, you have a high performance assembly that can improve energy efficiency and meet new stringent code requirements.

- Can provide an effective and affordable means of improving your Home Energy Rating System® (HERS) Index scores
- Improves moisture management, mitigating moisture-related losses
- Can reduce condensation risk
- Can reduce heating and cooling loads and associated utility usage

1 <http://www.drjcertification.org/system/files/drj/ter/node/1383/basfaseries.pdf>